

# ZIW194R | ZIW191R

## LED garden light

---

ZIW194R



ZIW191R



### Table of Contents

Safety instructions and warnings .....	2
Contents of the package .....	3
Technical Specifications .....	4
Installation and assembly .....	5
Download the app .....	5
Controls and functions .....	8
Troubleshooting FAQ .....	10

## Safety instructions and warnings



Before using the device, read the instructions for .



Observe the safety instructions in this manual.

Do not connect the garden light to the power supply while it is in its packaging. The light sources are not replaceable.

Disconnect from the mains when handling.

In the event of a malfunction, do not remove the light source and do not repair the garden luminaire! Do not interfere with the wiring.

Use only with the power supply supplied with the product. Suitable for both indoor and outdoor use.

If the light source is broken or damaged, the garden light must not be used or left live but disposed of safely.

This product is intended for decorative lighting.

This product is not a toy, do not put it in the hands of children!

EMOS spol. s r.o. declares that the product ZIW194R, ZIW191R complies with the essential requirements and other relevant provisions of the directives. The equipment can be operated freely in the EU.

The facility may be operated under General Permit No. VO-R/12/11.2021-11.

EMOS spol. s r.o. hereby declares that the radio equipment type ZIW194R, ZIW191R complies with Directive 2014/53/EU. The full text of the EU Declaration of Conformity is available on this website

<http://www.emos.eu/download>.



This product contains a light source with energy efficiency class G.



## Contents of the package

ZIW194R

LED garden light 4 pcs Adapter  
Driver

User manual



ZIW191R

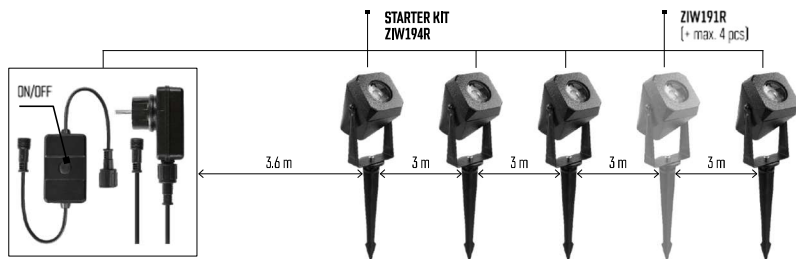
LED Garden Light 1 pcs User  
Manual

## Technical Specifications

Model	Protocol	Connecting	Luminous flux	Power input	Chromaticity temperature	Power
ZIW194R	Wi-Fi	2.4 GHz (Wifi IEEE 802.11b/g/n)	4x 10-100 lm	7 W	3 000-6 500 K	220-240 V AC / 12 V DC
ZIW191R	-	-	10-100 lm	1,5 W	3 000-6 500 K	12 V DC



## Installation and assembly



## Download the app

The app is available for Android and iOS via Google play and the App Store. To download the app, please scan the relevant QR code.



## Notice

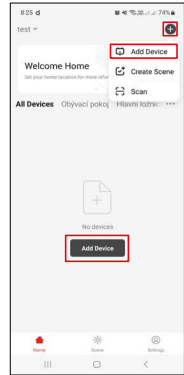
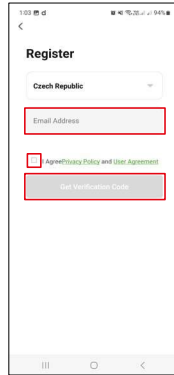
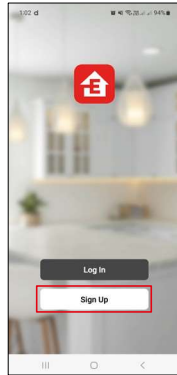
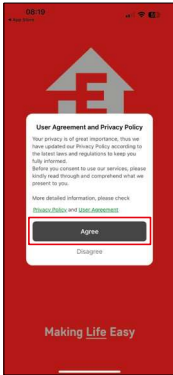
The LED floor lamp supports 2.4 GHz Wifi (does not support 5 GHz).



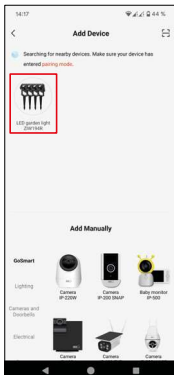
✓ 2.4 GHz

5 GHz ✗

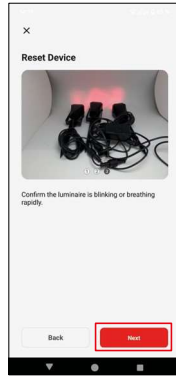
## EMOS GoSmart mobile



1. Open the EMOS GoSmart app and confirm the privacy policy and click I agree.
2. Select the "" option.
3. Enter the name of a valid email address and choose a password. Confirm your acceptance of the privacy policy. Confirm with the "register" button.
4. Select "add device".



5. Once the device is automatically found, click "add" or select the category and product type.

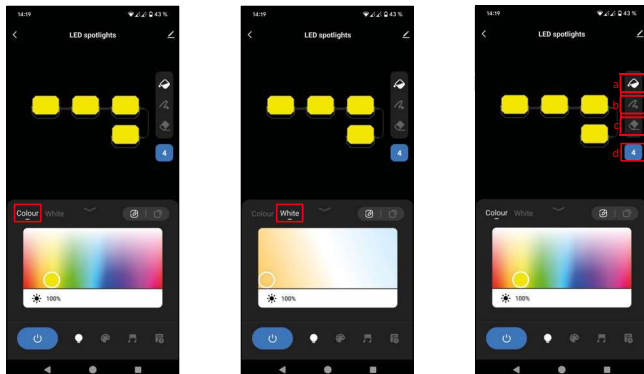


6. Switch on the device and confirm with the "next" button.
7. If the luminaire does not flash, put it into pairing mode by holding the pairing button long (approx. 10 seconds).
8. Confirm that the indicator light is flashing. Confirm with the next button.

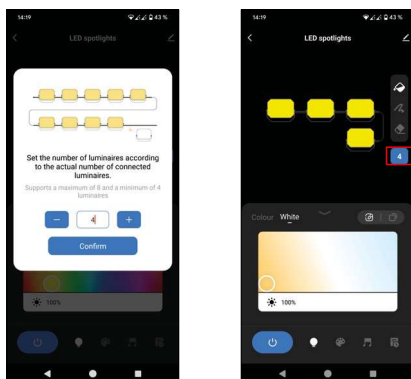


9. Enter the Wifi network name and password. Confirm with the "next" button.
10. Pairing to the is in progress.
11. The device is successfully paired. Confirm with the "done" button.

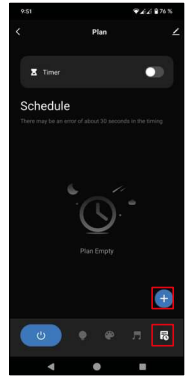
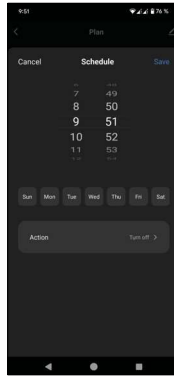
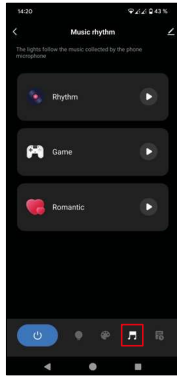
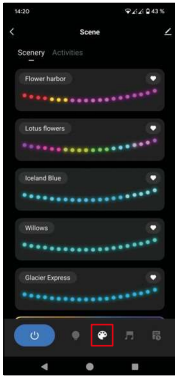
## Controls and functions



1. Color - "color" is the basic panel for RGB settings.
2. White - "white" is the basic panel for setting the chromaticity temperature.
3. Panel for setting the status of segments
  - a. Allows 1 colour to be set full screen
  - b. Possibility to set the colour for each segment separately
  - c. Option to turn off/on each segment separately
  - d. Possibility to set the number of segments (default 4, expandable up to 8 in case of purchase of expansion kits)



4. Possibility to set the number of segments. Default preset is 4 pcs.



5. Scene - this section is used for setting preset scenes or creating your own scenes.
6. Music- "music" is switching to music-based light mode, where the device responds to the recorded sound on the mobile device.
7. Plan- "timer" is a function that allows you to set the device to turn on/off after a certain time.

## Troubleshooting FAQ

I can't get the devices to pair. What can I do?

- Make sure you are using a 2.4 GHz wifi network and have a strong enough signal.
- Allow the app all permissions in the settings.
- Make sure you're using the latest version of the mobile operating system and the latest version of the app.

I'm not getting notifications, ?

- Allow the app all permissions in the settings.
- Turn on notifications in the app settings (Settings -> App notifications).

Who all can use the equipment?

- The device must always have an administrator (owner).
- The admin can share the device with the rest of the household and assign rights to them.